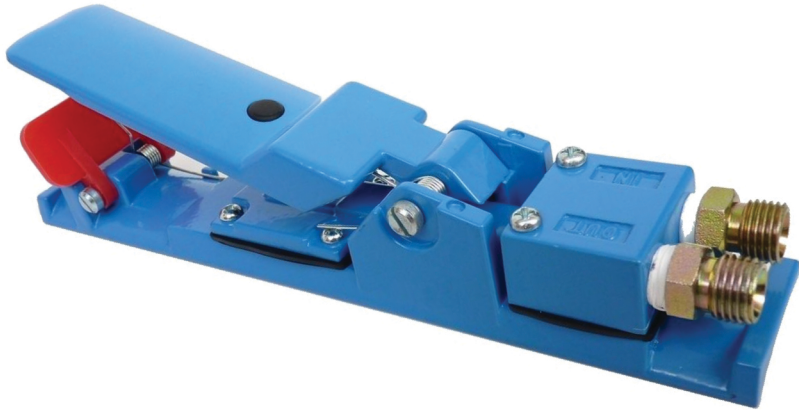


1200. PNEUMATIC REMOTE CONTROL HANDLE

For applications that require frequent starts and stops, machines should be equipped with pressure-hold pneumatic remote controls, which keep the blast machine under pressure but allow the operator to start and stop blasting as frequently as needed. The machine is pressurized and depressurized manually, and the remote control handle controls the on/off of the abrasive and air independently.



These systems are available in electric models (1790).

1200

