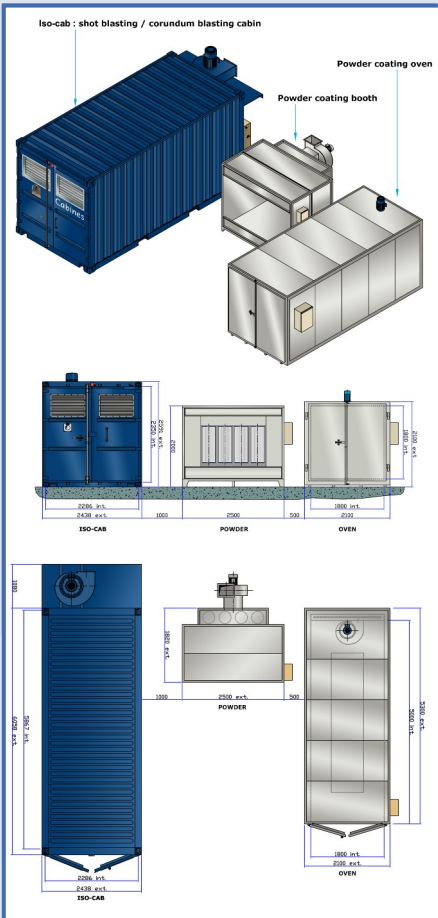


Ligne-Cab.e Medium volume



Ligne-cab.e : Powder coating line with electric oven shot blasting / corundum blasting cabin + Powder coating booth + Powder coating oven



shot blasting / corundum blasting cabin : Useful dimensions: Length: 6 000 mm - Width: 2 350 mm - Height: 2 400 mm

1. Sandblasting container:

- Container " first trip " Iso 20"
- Reinforced steel structure,
- **Steel floor 4 mm,**
- **3 mm pendulum rubber** with low steel protection 120 mm,
- Waterproof **armored luminaire** with unbreakable glass,
- Lighting **18 LED tube 24 watts: 54 000 lumens,**
- **Electrical box** with operational safety and door safety.

2. Ventilation and dust removal:

- **Dust collector cartridges** with special corundum,
- Special shielded construction thickness 3 and 5 mm,
- Motor-fan **11 kW, 3 000 rpm, 83 db,**
- Flow rate **11 000 m³/h** to 220 mm CE, **8 400 m³/h** to 320 mm CE (norms : 7 900 m³/h)
- Filtering surface: 150 m², **6 polyester cartridges 250 gr/m²,**
- Discharge less than 1 mg/m³,
- **Automatic unclogging.**

3. Recycling of the abrasive, sandblaster and blaster equipment:

- Abrasive cleaning at **3 levels:** fine, medium and large, 10 mm baffles,
- **200 liter sandblaster** with fork passage,
- Electric control,
- **Complete sandblasting equipment:** panoramic helmet with Vortex air heater, **dual-stage** air filter, **leather suit** ...

Powder coating booth: Useful dimensions:

- Width: **2 500 mm** - Depth: **1 820 mm** - Height: **2 000 mm**

4. Powder coating enclosure:

- Reinforced **galvanized steel sheet structure,**
- **LED lighting** in waterproof luminaire,
- Electrical box with safety devices.

5. Ventilation and dust removal:

- Rear suction box all over the bottom of the cabin,
- **5.5 Kw fan,**
- Dust collector with **6 polyester cartridges,**
- **Automatic unclogging** with pulsed air jet.

Powder coating oven: Useful dimensions:

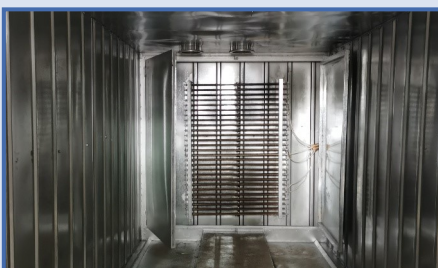
- Length: **5 000 mm** - Width: **1 800 mm** - Height: **1 800 mm**

6. oven enclosure:

- Reinforced **galvanized steel sheet structure,**
- **100 mm** thermal insulation with high temperature rock wool,
- With transport trolley,
- Electrical box with **regulation and safety devices.**

7. Heating module:

- **Electric heating: 52 kW,**
- High temperature recycling fan, power **2.2 kW,**
- Heat distribution by vertical ventilation,
- Heating temperature: **200°C, duration 15 to 30 mins.**



Ligne-cab.e shot blasting / corundum blasting cabin + Powder coating booth + Powder coating oven

Amount of the supply excluding tax, ex works: **68 000 €**

Delivery time: 3 months
Payment terms: bank transfer
- 40% upon order, 60% upon delivery to the factory..

Options :
- Shipping: extra

